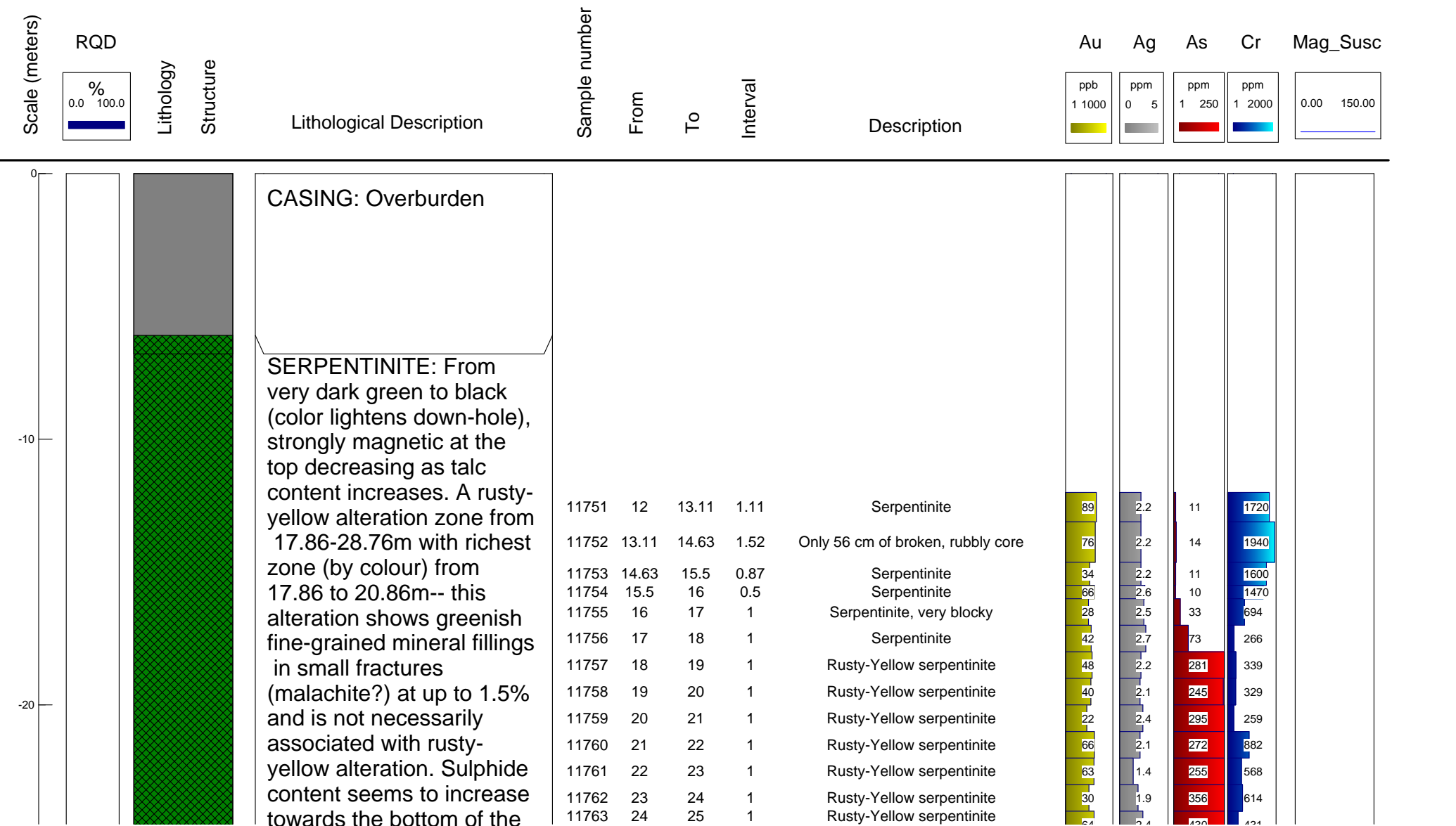


Easting :544097Azimuth :96

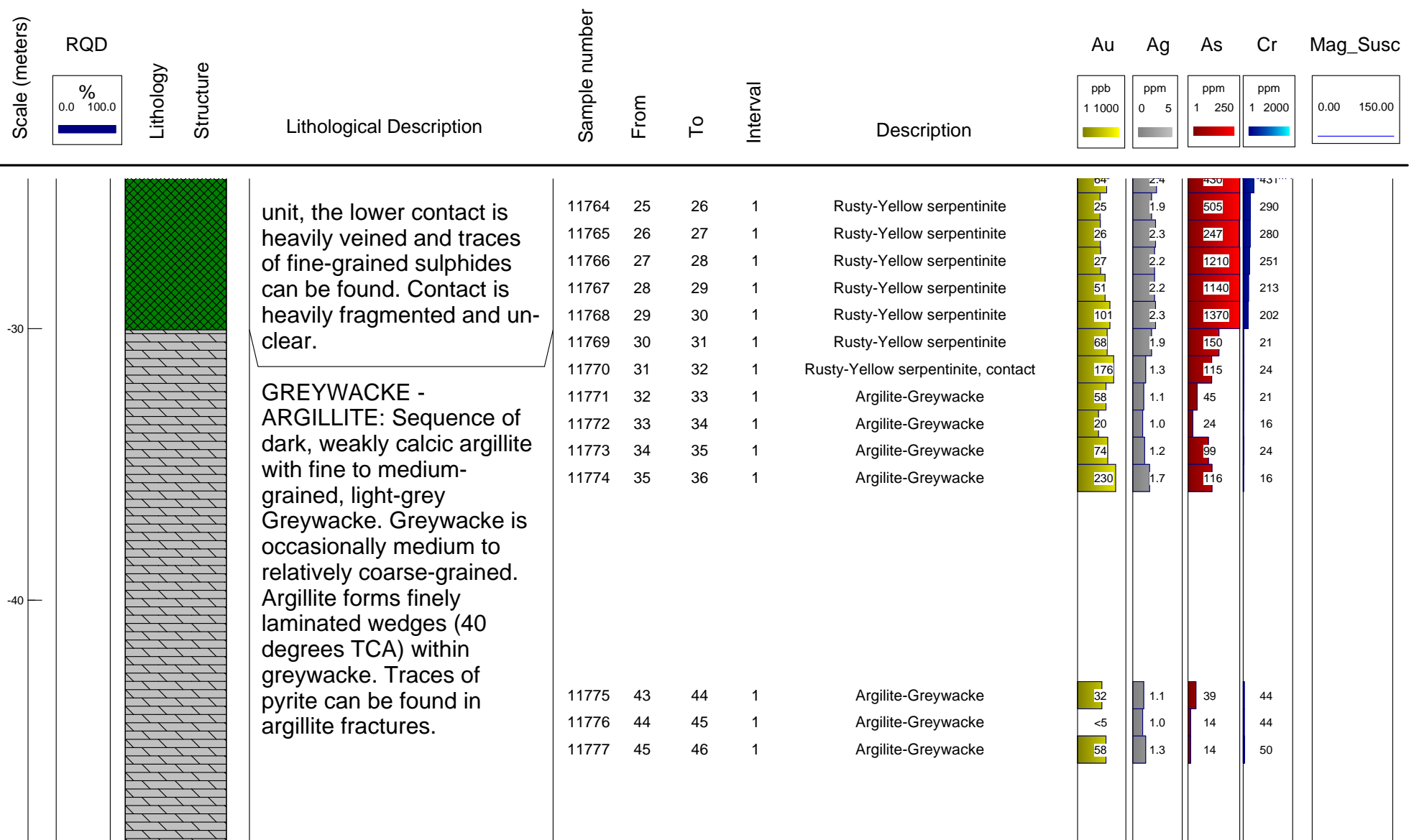
Northing :6691664Dip :-50

Elevation :716.3Total Depth :106.07



Easting :544097  
Northing :6691664  
Elevation :716.3

Azimuth :96  
Dip :-50  
Total Depth :106.07



**Total hole depth:** 106.07

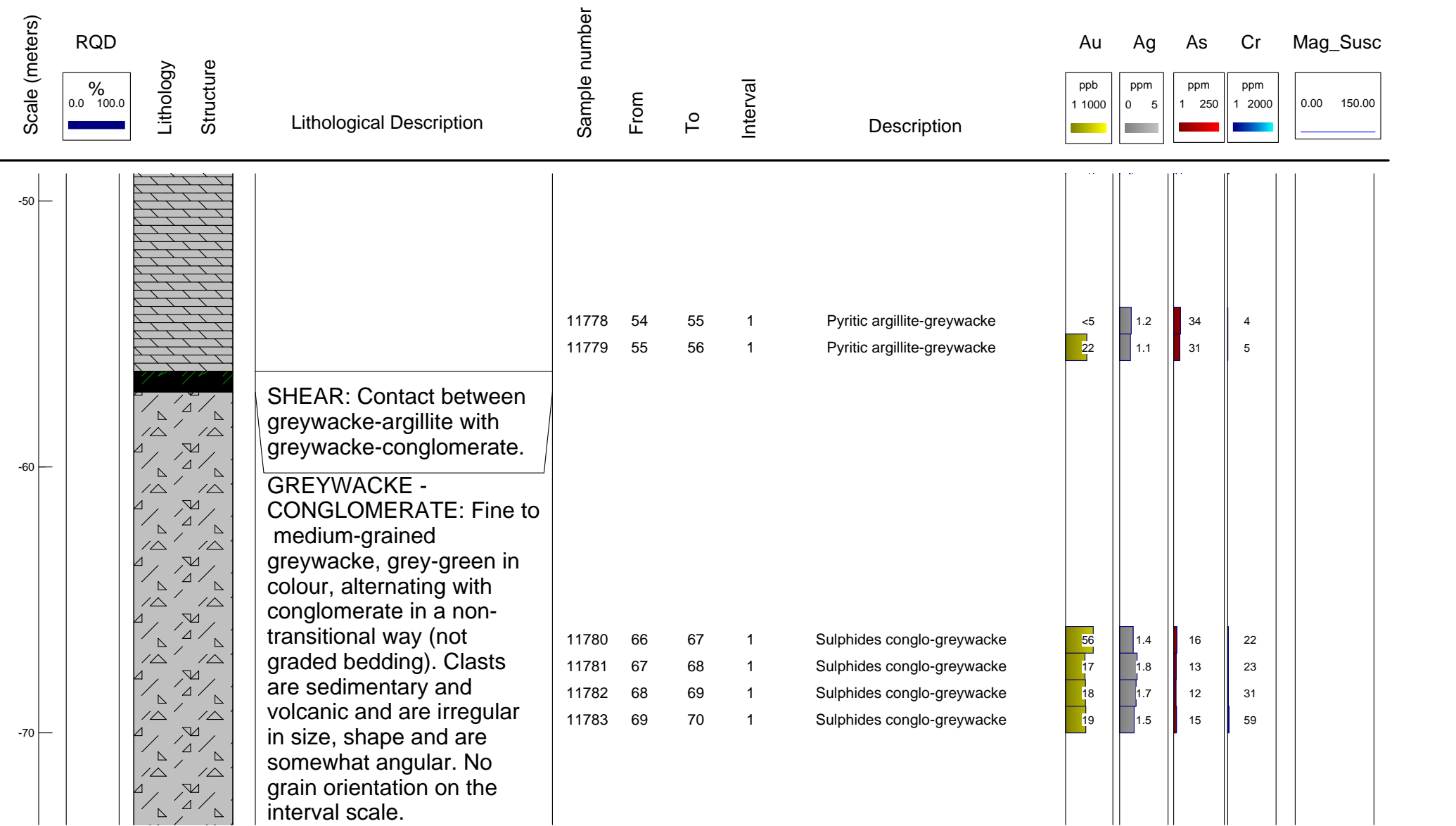
**Logged by:** Stephan Ruest



Easting :544097Azimuth :96

Northing :6691664Dip :-50

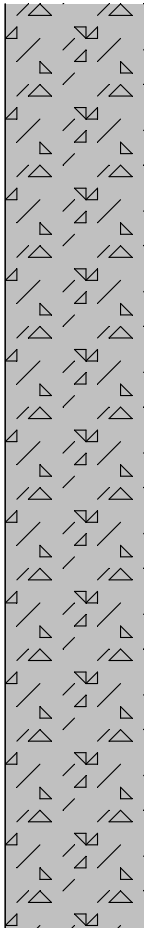
Elevation :716.3Total Depth :106.07



Easting :544097Azimuth :96

Northing :6691664Dip :-50

Elevation :716.3Total Depth :106.07

Scale (meters)	RQD	Lithology	Structure	Lithological Description	Sample number	From	To	Interval	Description	Au	Ag	As	Cr	Mag_Susc
	<div><div>%</div><div>0.0100.0</div></div>									<div><div>ppb</div><div>11000</div></div>	<div><div>ppm</div><div>05</div></div>	<div><div>ppm</div><div>1250</div></div>	<div><div>ppm</div><div>12000</div></div>	<div><div>0.00150.00</div></div>
<div><div>-80</div><div>-90</div></div>				Conglomerite matrix is light-grey and becomes markedly darker in colour (to almost black) at a depth of 98.45m. Traces of pyrite can be found in fine-grained greywacke. Some stronger mineralization (0.5% to 1%) in dark greywacke with lower contact of conglomerate (at around 98.83m).										

Easting :544097Azimuth :96

Northing :6691664Dip : -50

Elevation :716.3Total Depth :106.07

Scale (meters)	RQD		Lithology	Structure	Lithological Description	Sample number			Description	Au	Ag	As	Cr	Mag_Susc
	<div><div>%</div><div>0.0100.0</div></div>					From	To	Interval		<div><div>ppb</div><div>11000</div><div></div></div>	<div><div>ppm</div><div>05</div><div></div></div>	<div><div>ppm</div><div>1250</div><div></div></div>	<div><div>ppm</div><div>12000</div><div></div></div>	<div><div>0.00150.00</div></div>
-100														